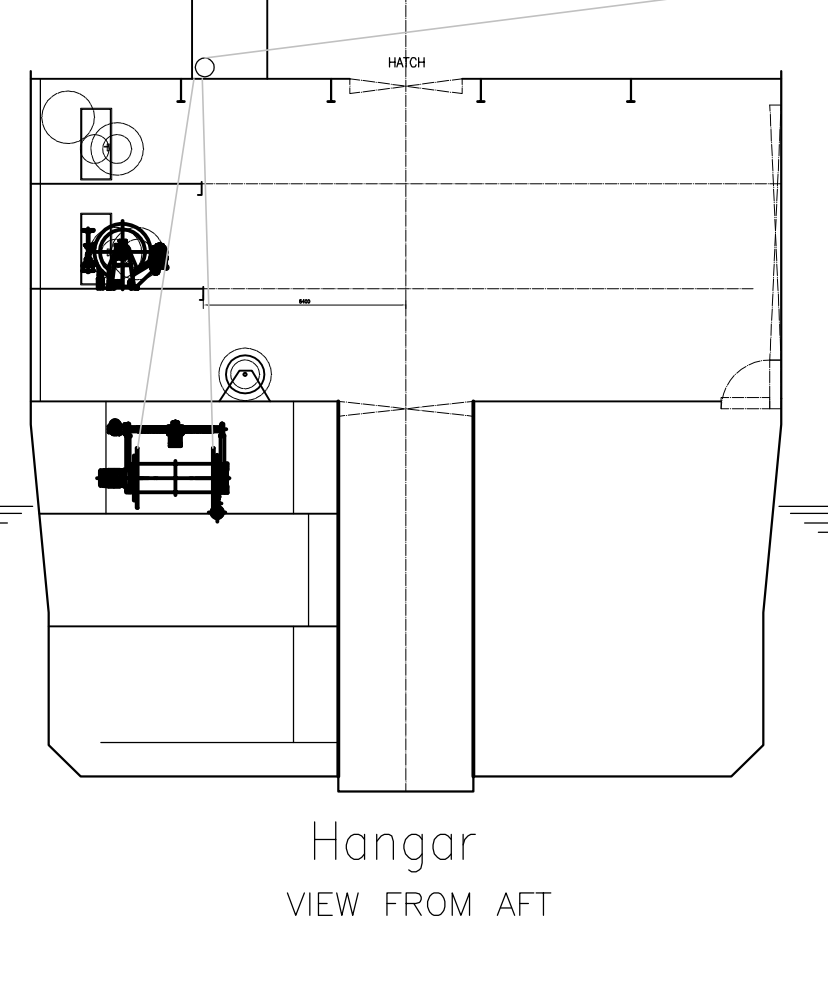
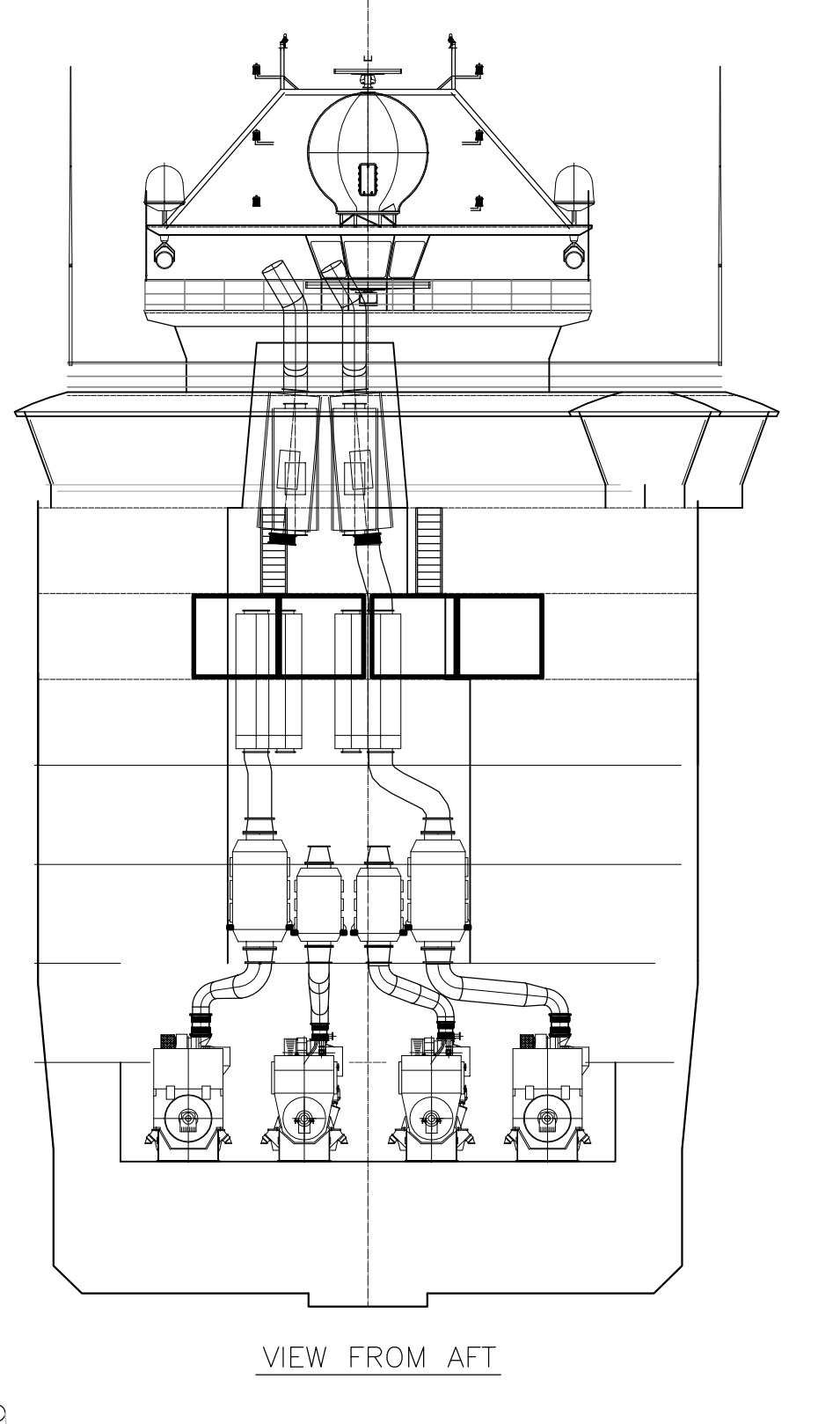
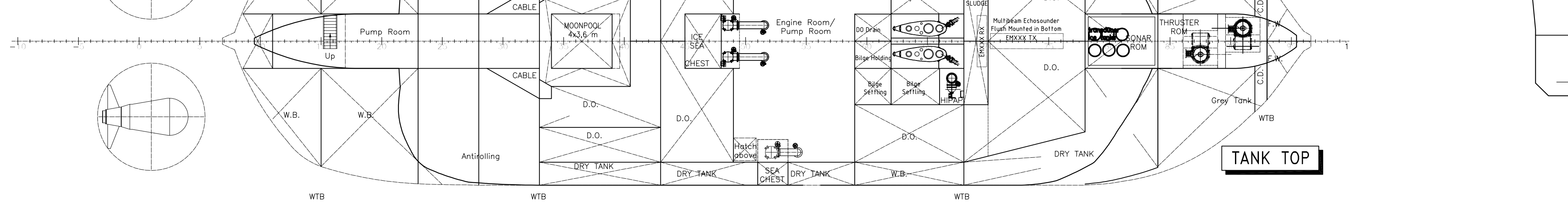
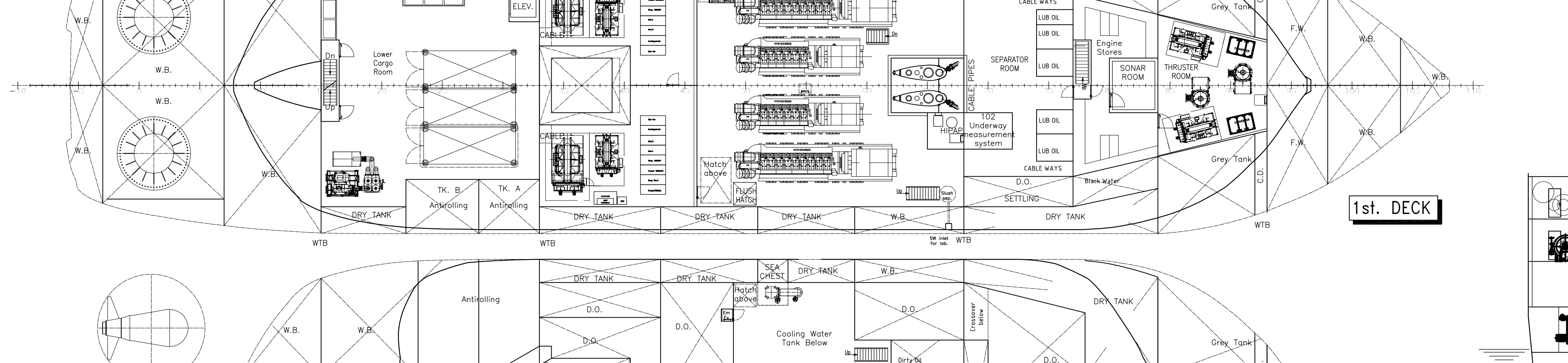
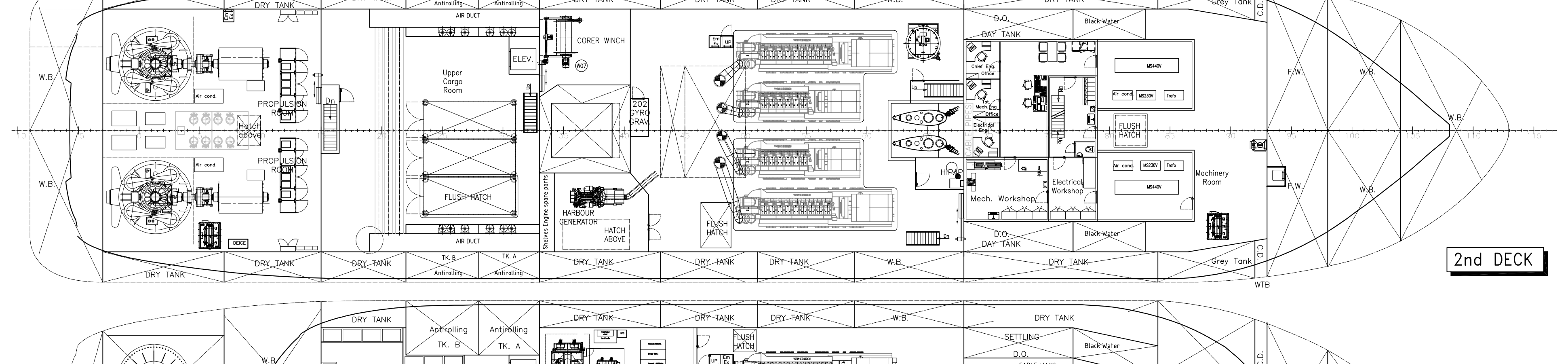
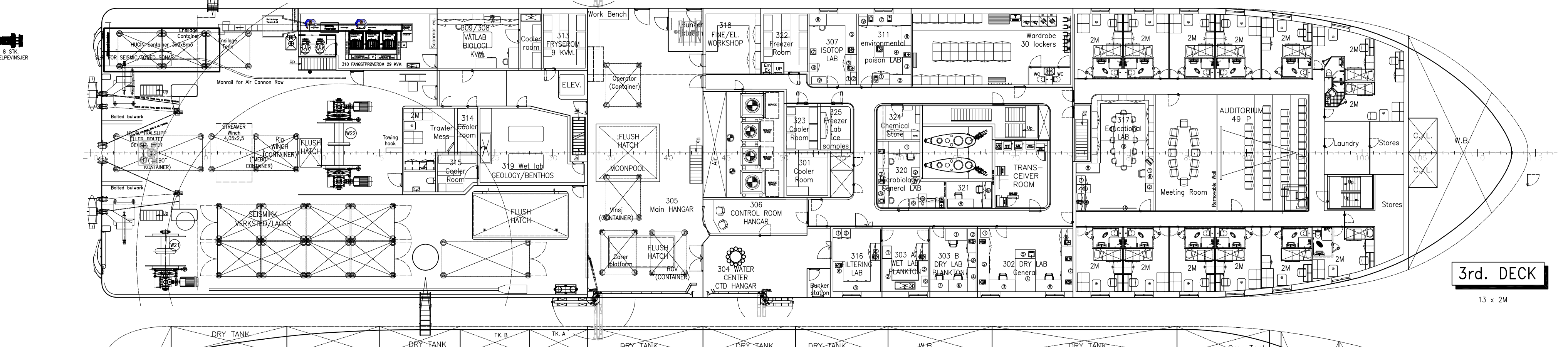
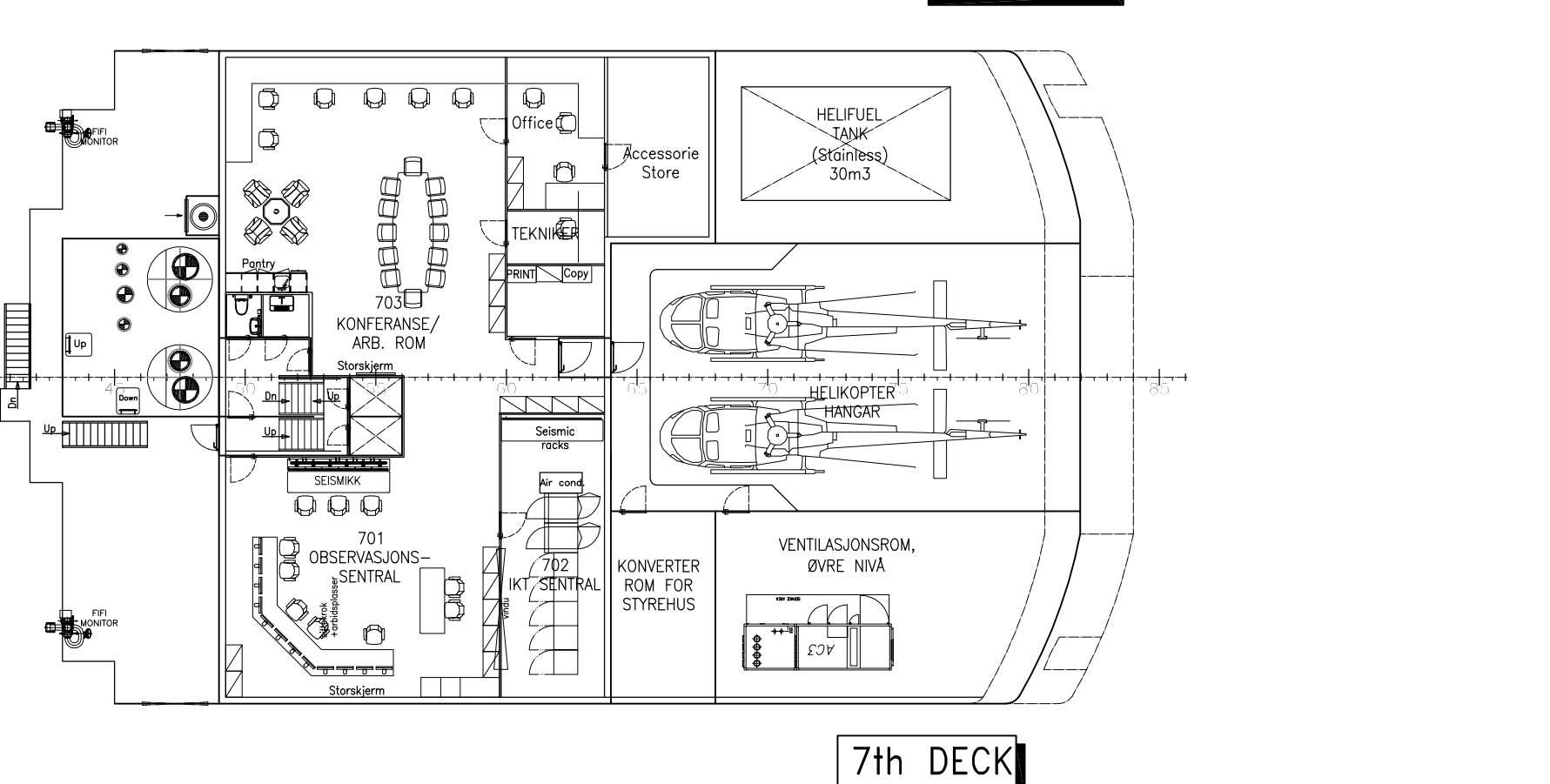
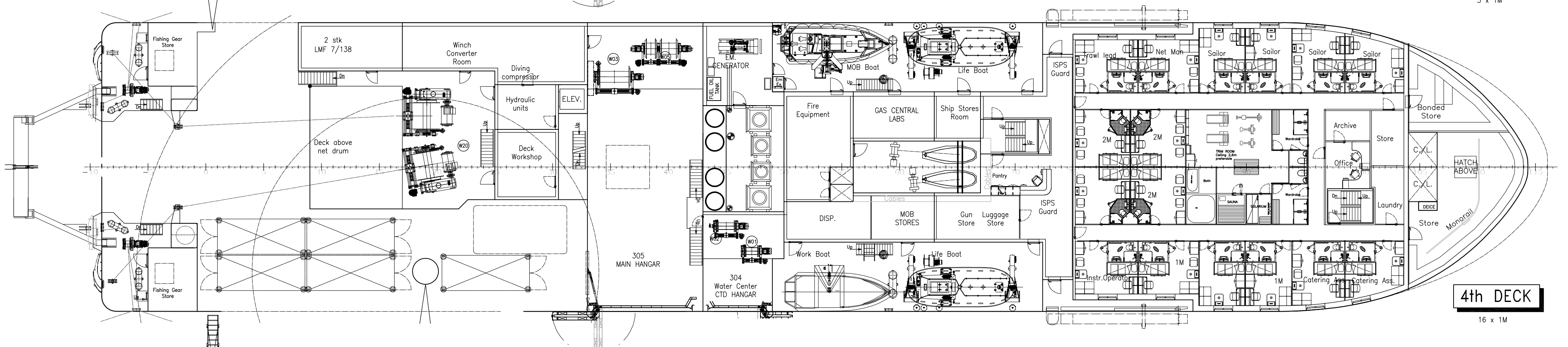
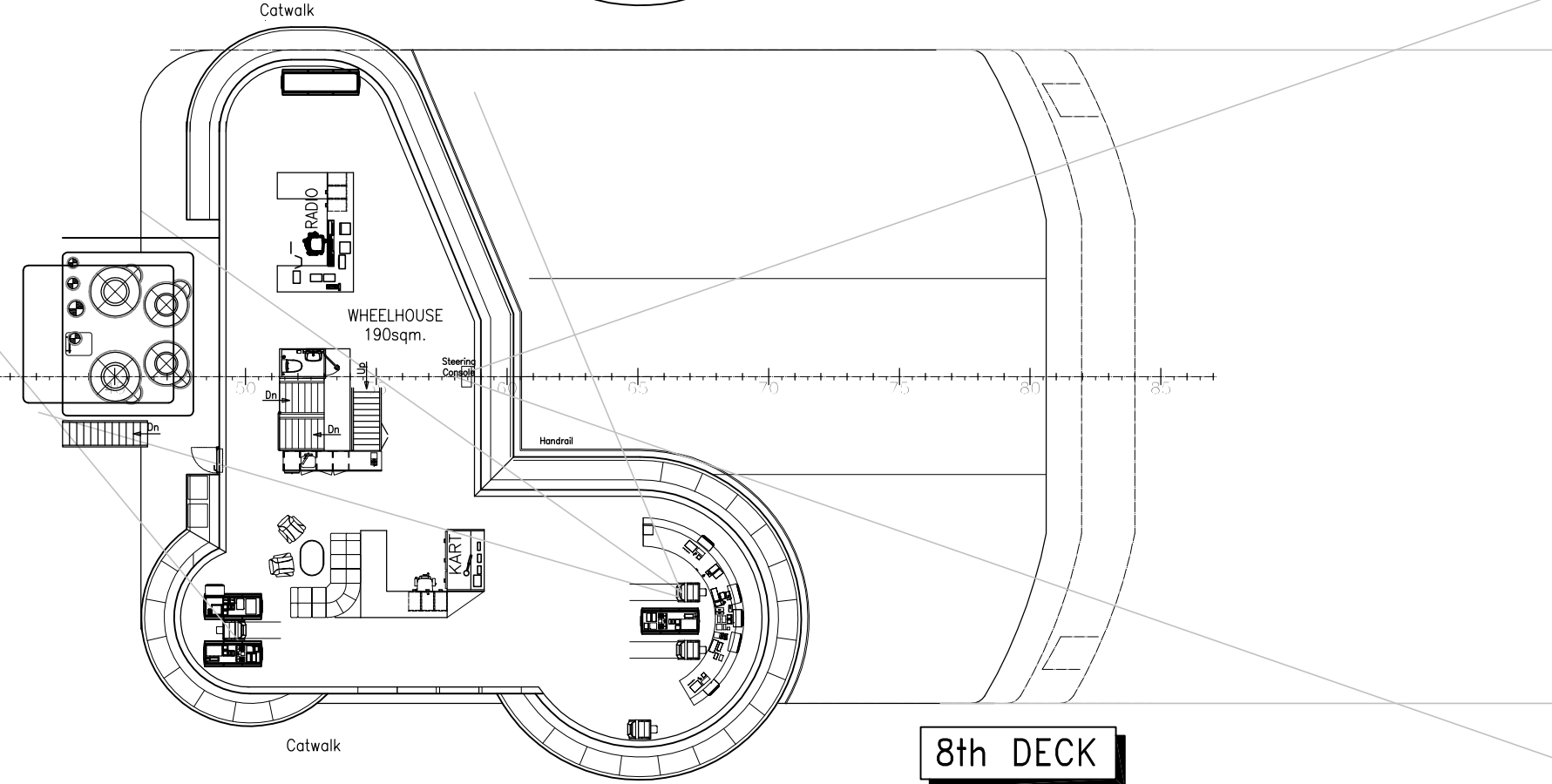
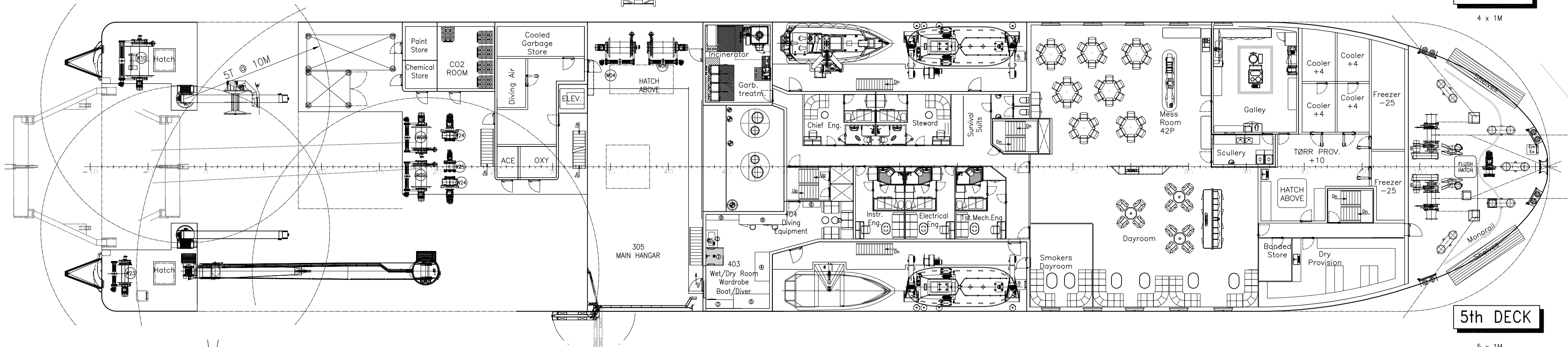
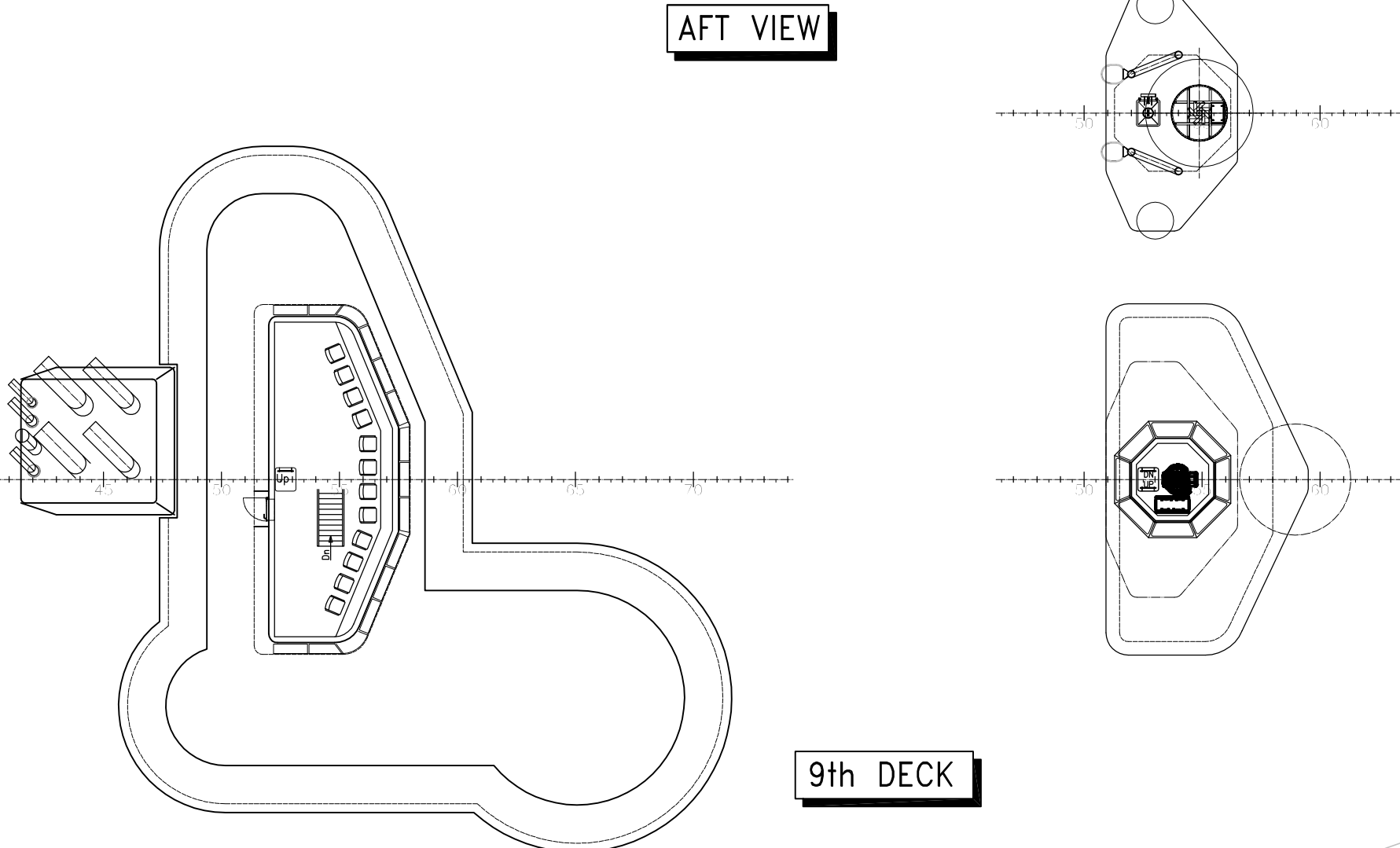
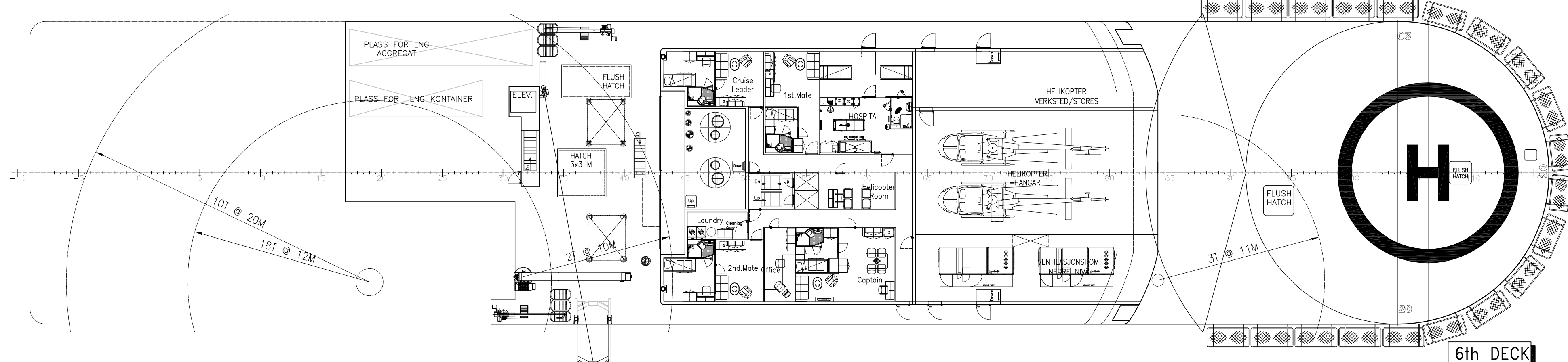
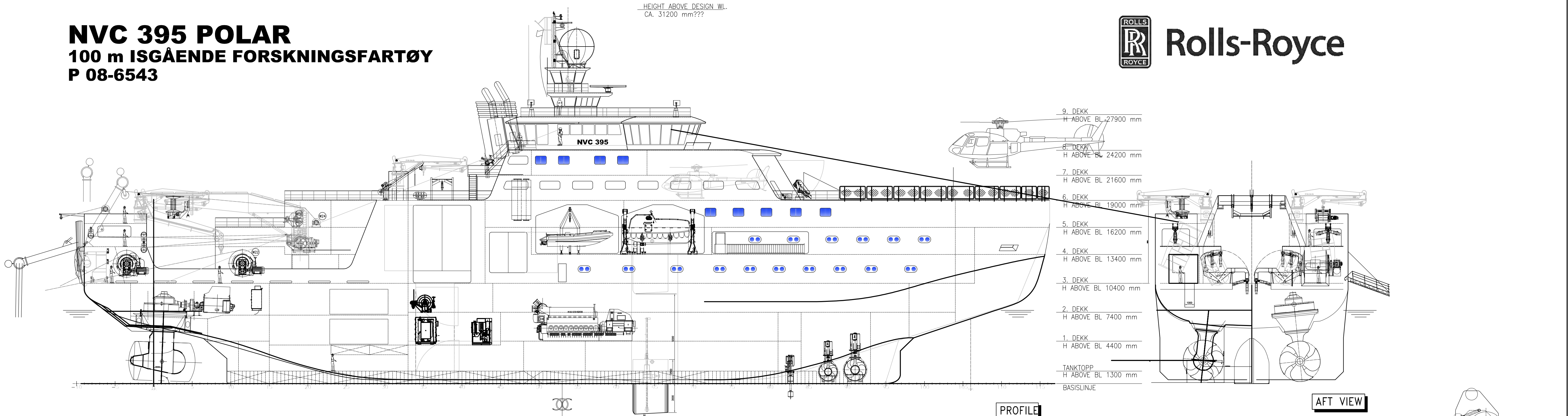


NVC 395 POLAR
100 m ISGÅENDE FORSKNINGSFARTØY
P 08-6543



HOVEDDIMENSJONER

LENGDE O.A.	CA: 100,0 M
LENGDE MELLOM PP.	: 84,80 M
BREDDEN PÅ SPANT	: 20,00 M
DYBDE TIL 3. DEKK	: 10,40 M
DESIGN DYPGANG	CA: 7,60 M

INNREDNING FOR 50 PERSONER I
26 ENKELTLUGARER, 12 DOBBEL LUGARER

CLASS:
DNV + 1A1, Special Purpose Ship, E0, RP,
NAUT-AW, CLEAN DESIGN, Icebreaker POLAR-10,
DAT(35), WINTERIZED BASIC, HELDK-SHF,
DYNPOS-AUTS, COMF-V(2)/C(2), DK(+)

ARBEIDSKOPI
DATO: 12/5-2009

CUSTOMER	Institute of Marine Research	TITLE	GENERAL ARRANGEMENT NVC 395 POLAR
Yard No.		Scale	1:200 AX
Rolls-Royce	Rolls-Royce Marine AS Ship Technology - FAH & SPV 14000 Arctic Norway 14000 Arctic Norway 14000 Arctic Norway 14000 Arctic Norway	Project No.	08-6543 - 101 - 001
NVC-Design™		Rev.	A